

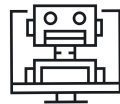
# **Q1 2023 Announcement**

# Q1 2023: Updates at a Glance



## Front-End Sites Update

Get the user experience and resiliency benefits of a decoupled architecture in a single, trusted platform.



## Autopilot Update

New flexibility to perform additional testing, share Multidev updates for stakeholders reviews, or wait to merge updates until a specific time of day.



## Pantheon Learning

Pantheon Learning is your training hub to learn about the Pantheon platform through self-paced courses and virtual instructor-led training.



## Drupal 10 Support

With Drupal 10, customers are finding success by leveraging the newest features directly through the Pantheon dashboard.



## Enterprise Billing Center

Customers can now easily understand their invoices, along with data visualizations showing how individual sites contribute to overall cost.



## PHP 8.2 Support

Enterprises can now leverage the new features and improvements found in PHP 8.2.



## Site Listing Page Performance

Pantheon has improved the site listing page performance — now 66% faster.



## LocalDev: End of Life

On June 30, 2023, Pantheon will discontinue support for its built-in LocalDev feature.

# Front-End Sites Updates

## Improved Enterprise Functionality and Learning Opportunities for New Users

- Upstreams to Site Creation Path in the Dashboard
- Customer Experience Improvements
- Docs & Updates To Next.js Kits
- New Infrastructure & Deployment Path Settings

### Additional Resources:

One Sheet: [Front-End Sites](#)

Blog: [Building Blazing Fast Decoupled Sites with Easytech Green](#)



# Pantheon Learning

## On-Demand Pantheon Workshops

Learn about the Pantheon platform through self-paced courses and coming soon... sign up for one-on-one instructor-led training.

Organizations will find everything they need to create, launch, and manage their sites on Pantheon.

Courses are available any time, anywhere with Pantheon Learning. Start today at [learning.pantheon.io](https://learning.pantheon.io)

## Additional Resources:

One Sheet: [Pantheon Learning](#)



# Welcome to Pantheon Learning

*Choose Your Learning Journey*

[View Catalog](#)

**BEGINNER**



## Getting Started With Pantheon Overview

Getting Started with Pantheon is an introductory course for those who are new to Pantheon, or for those who want to brush up on the basics. This course is designed to get you started with Pantheon dashboards, workflows, and tools.

3 videos

**BEGINNER**



## Onboarding

Whether you're a new or existing Pantheon user, this collection of courses and trainings will teach you how to create and launch a site, and make sure you're getting the most out of our platform.

**BEGINNER**



## Create a Site on Pantheon! (Quick Lesson)

This quick lesson gives you a high-level overview of creating a site on Pantheon.

1 video

**BEGINNER**



## Is Autopilot Right for My Website? (Quick Lesson)

This quick lesson gives you an overview of Autopilot as well as the basic requirements to use it with your sites. If you're thinking about using Autopilot, watch this lesson first!

1 video

# Dashboard Updates

*WebOps Innovations*

# Enterprise Billing Center Update

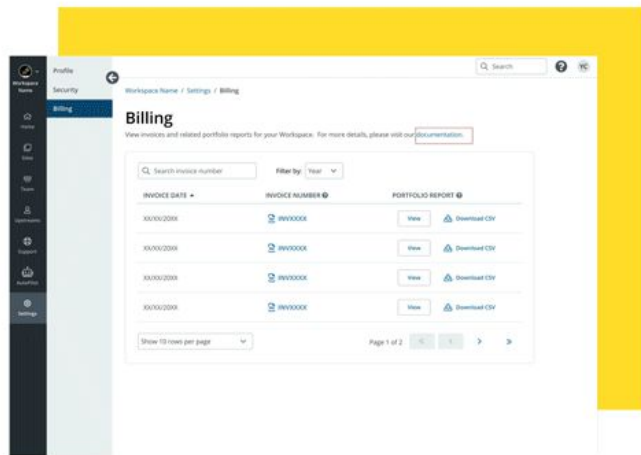
## Easier to Manage Billing for Customers with Large Portfolios of Sites

Pantheon's Enterprise Billing Center is now available to all customers directly in the Pantheon Dashboard.

Customers can now easily understand their invoices, along with data visualizations showing how individual sites contribute to overall cost.

### Additional Resources:

One Sheet: [Enterprise Billing Center](#)



# Autopilot Update

## Added Flexibility for Autopilot Users


Autopilot now allows more control over when updates are merged and to which environments, giving teams flexibility to perform additional testing, share Multidev updates for stakeholders reviews, or wait to merge updates until a specific time of day.

All this is now possible with the latest Autopilot enhancements.





# Autopilot: Do Not Deploy Updates


SiteName

Mattel, Inc
Autopilot

Home

Sites

Team


Autopilot


Upstreams


Support

Settings

Search
?


Configuration


Schedule


Visual Review

How often should Autopilot run?

Schedule Autopilot to run
Weekly

Sync Live environment before testing?

☐ Sync Live environment

If selected, Autopilot will sync the Live database and files to the Dev environment before running.

Which environment should updates be deployed to?

Autopilot will deploy site updates to the selected environment.

Do Not Deploy

When "Do Not Deploy" is chosen, site updates will stay in the Autopilot Multidev environment where you can merge to Dev anytime.

Back
Continue

- Remove "environment" from menu
- Update heading: "Which environment should updates be deployed to?"
- Update helper text, and move it above the field to make room for conditional text display.

When Do Not Deploy is selected:

- Show explainer underneath form field.

Dev

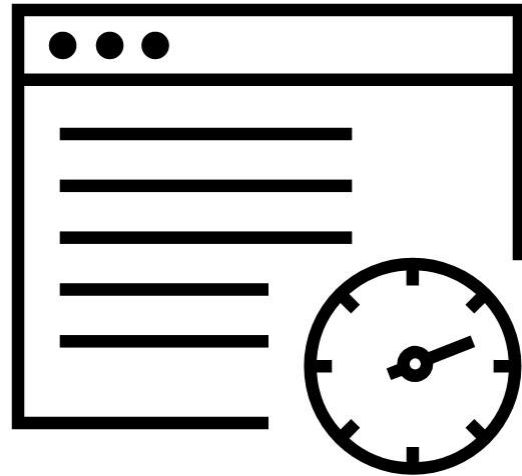
Dev
Test
Live
Do Not Deploy

Return to Index

# More Responsive Dashboard Especially for Large Portfolios

## Site Listing Page Now Loads 66% Faster

For customers with large site portfolios (managing even thousands) of websites, the Sites page loads and render 66% faster than previously.



# Platform Updates

*Pantheon continues to support the latest version of PHP & Drupal*

# Drupal 10 Support

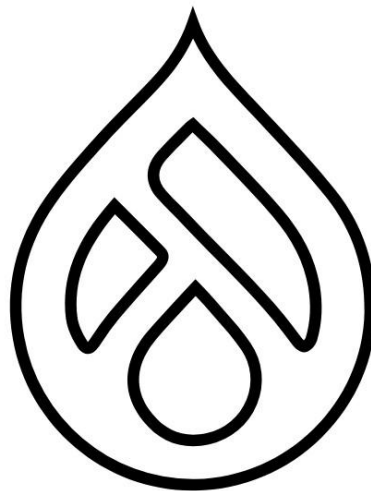
## Effortlessly Create new Drupal 10 sites and Update Existing Drupal 8 or 9 Sites

With Pantheon support for Drupal 10, it has never been easier to create new D10 sites or upgrade existing sites on the Pantheon platform.

With Pantheon's support for the latest version of Drupal—one of the most popular open source CMS frameworks for enterprise—customers are finding success by leveraging the newest features directly through the Pantheon dashboard.

### Additional Resources:

Blog: [Explore the Best of Drupal 10](#)



# PHP 8.2 Support

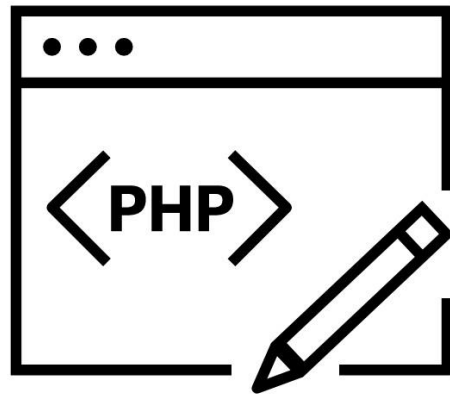
**Enterprises can now leverage the new features and improvements found in PHP 8.2.**

Pantheon continues to support the latest version of PHP. Since its release in December, 2022, developers have been able to leverage the new features found in PHP 8.2.

Using the latest PHP version is suggested to maximize site security, in addition to the latest syntax and execution upgrades.

## Additional Resources:

Blog: [Pantheon will continue to support sites running PHP 7.4](#)



# **End of Life Announcement**

# End of Life: LocalDev

## Pantheon discontinues support for LocalDev

Beginning June 30, 2023, Pantheon will discontinue support for its built-in LocalDev feature.

We are making this change because in the years since we introduced LocalDev, a number of similar third-party options have become available to Developers.

### Additional Resources:

Blog: [Pantheon's LocalDev will be Discontinued in June 2023.](#)  
[Learn About Alternatives.](#)

